

Stephanie Morrison
Final Decree
Book: 759, Page: 1570
(E of the Center of Little
Deep Fork Creek)

SECTION 36, T16N, R7E

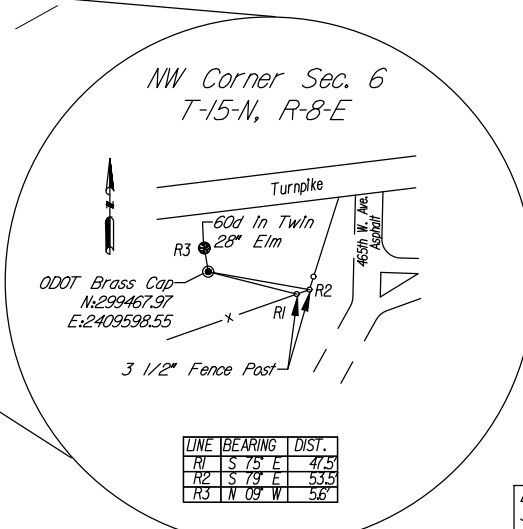
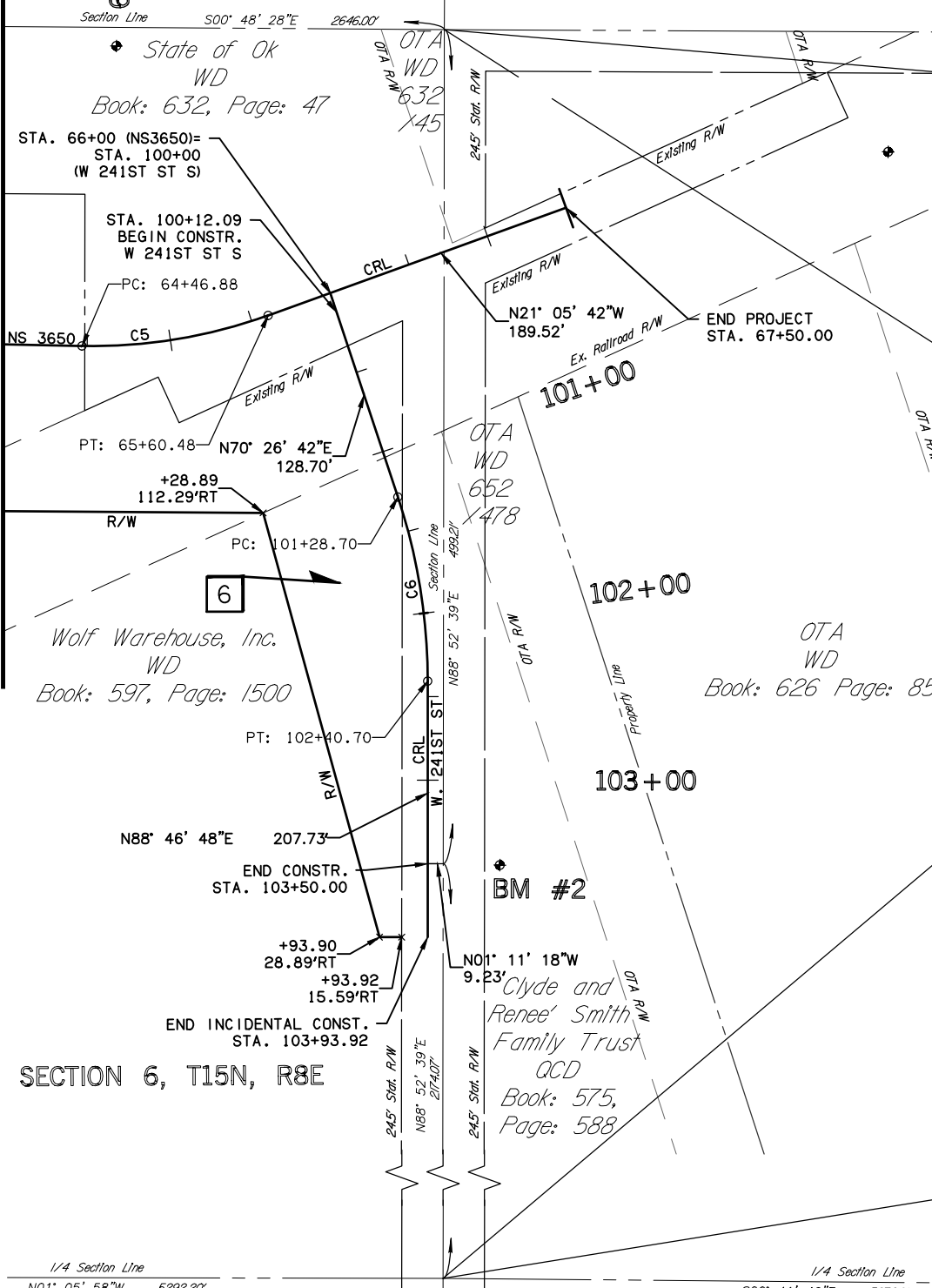
Stephanie Morrison
Transfer-on-Death Deed
Book: 721, Page: 179
(E/2 of the NE/4 and the SE/4 less approx. 1.5)
acres owned by OTA, of the Section 36, T-16-N, R-7-E)

DESCRIPTION	REVISIONS	DATE
-------------	-----------	------

CRL CURVE DATA TABLE (NS3650)

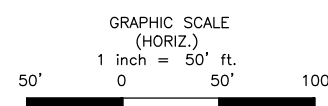
CURVE NO.	P.I. STATION	Δ	D	R	T	L	E	P.C.		P.I.		C.C.		P.T.		DESIGN V MPH	FULL SUPER
								NORTHING	EASTING	NORTHING	EASTING	NORTHING	EASTING	NORTHING	EASTING		
C5	65+04.33	21°08'01.00"	18°36'09.00"	308.00	57.46	113.61	5.31	299255.0938	2409792.4597	299312.5497	2409792.4982	299255.3006	2409484.4597	299366.1552	2409771.8188	35	6.20%

STA. 64+00

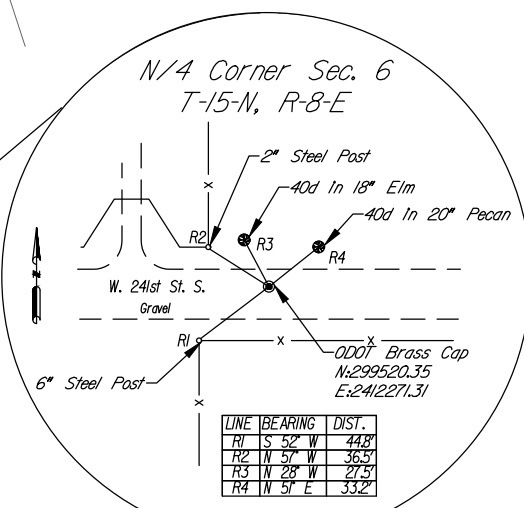


Timothy E. McCormick
Correction JTWD
Book: 898, Page: 514
(Part of the NW/4 and SW/4, lying North
of OTA ROW in Section 31, T-16-N, R-8-E)

Benchmark	Sta.	Dist.	Elev.
Benchmark - #3	Sta. 64+86.84	178.89' Lt.	80d In 12" Elm
Benchmark - #2	Sta. 103+50.86	43.16' Lt.	80d In 32" Sycamore



SECTION 31, T16N, R8E



CRL ALIGNMENT TABLE (NS3650)

ALIGNMENT PT.	STATION	BEARING	DISTANCE	NORTHING	EASTING
BEGIN PROJECT	39+67.69			296813.2467	2409610.0711
P.C.	42+04.97	N10°19'49"E	237.28	297046.6799	2409652.6209
P.I.	43+39.52	N10°19'49"E	134.55	297179.0466	2409676.7486
P.T.	44+71.82	N07°45'50"W	134.55	297312.3609	2409658.5723
P.C.	46+41.65	N07°45'50"W	169.83	297480.6329	2409635.6298
P.I.	48+13.44	N07°45'50"W	171.79	297650.8446	2409612.4229
P.T.	49+84.60	N00°42'20"E	244.68	297822.6181	2409614.5386
P.C.	52+29.28	N00°42'20"E	77.85	298067.2827	2409617.5520
P.I.	53+07.13	N00°42'20"E	77.85	298145.1239	2409618.5108
P.T.	53+83.21	N21°51'17"E	77.85	298217.3763	2409647.4896
P.C.	56+91.06	N21°51'17"E	307.85	298503.1071	2409762.0897
P.I.	57+71.42	N21°51'17"E	80.36	298577.6939	2409792.0047
P.T.	58+49.84	N00°02'19"E	80.36	298658.0563	2409792.0587
BEGIN BRIDGE	61+48.59	N00°02'19"E	298.75	298956.8059	2409792.2593
END BRIDGE	63+00.09	N00°02'19"E	151.50	299108.3059	2409792.3611
P.C.	64+46.88	N00°02'19"E	146.79	299255.0938	2409792.4597
P.I.	65+04.33	N00°02'19"E	57.46	299312.5497	2409792.4982
P.T.	65+60.48	N21°05'42"W	57.46	299366.1552	2409771.8188
END PROJECT	67+50.00	N21°05'42"W	189.52	299542.9699	2409703.6090

CRL ALIGNMENT TABLE (W 241ST ST S)

ALIGNMENT PT.	STATION	BEARING	DISTANCE	NORTHING	EASTING
BEGIN CRL	100+00.00			299403.0143	2409757.5997
P.C.	101+28.70	N70°26'42E	128.70	299446.0915	2409878.8767
P.I.	101+85.18	N70°26'42E	56.48	299464.9972	2409932.1027
P.T.	102+40.70	N88°46'48E	55.52	299466.1997	2409988.5739
END PROJECT	103+50.00	N88°46'48E	109.30	299468.5266	2410097.8466
END INCIDENTAL	103+93.92	N88°46'48E	43.92	299469.4616	2410141.7583

CRL CURVE DATA TABLE (W 241ST ST S)

CURVE NO.	P.I. STATION	Δ	D	R	T	L	E	P.C.		P.I.		C.C.		P.T.		DESIGN V MPH	FULL SUPER
								NORTHING	EASTING	NORTHING	EASTING	NORTHING	EASTING	NORTHING	EASTING		
C6	101+85.18	18°20'06.07"	16°22'12.80"	350.00	56.48	112.00	4.53	299446.0915	2409878.8767	299464.9972	2409932.1027	299116.2790	2409996.0251	299466.1997	2409988.5739	35	6.00%

DESIGN	BSF	02/17	OKLAHOMA DEPARTMENT OF TRANSPORTATION GUY ENGINEERING SERVICES, INC.
DRAWN	BLP	02/17	
CHECKED	PAE	02/17	
APPROVED	JRW	02/17	
SQUAD			

ALIGNMENT DATA

STATE JOB NO. 29407(04) SHEET NO. R005

Friday, July 28, 2017 10:16:31 AM
 V:\13-850 Br 181A Little Deep Fork Ck - Creek 3\CIV3D\PLANS\850-ALIGNMENT DATA SHEETS.dwg